

SNIFE CLASS RACING ASSOCIATION

MEASUREMENT DATA SHEET FOR CERTIFIED BOATS

Revised February 2019

This page to be used for all boats. *For measurements in Italic refer to the Class Rules*

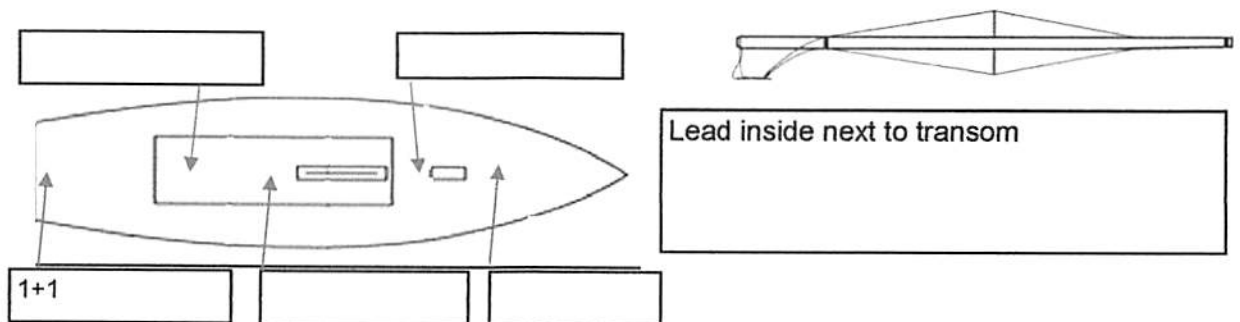
HULL NUMBER	31801	BUILDER	SINERGIA RG	
MODEL	B	YEAR OF MANUFACTURE	2022	
OWNER	LUIS SOTO VALERO		COUNTRY	ESPAÑA

BARE HULL	<input type="checkbox"/>	COMPLETE	<input checked="" type="checkbox"/>	NCOMPLETE	<input type="checkbox"/>
HULL MATERIAL: WOOD	<input type="checkbox"/>	FIBERGLASS	<input checked="" type="checkbox"/>	make note of	
DECK MATERIAL: WOOD	<input type="checkbox"/>	FIBERGLASS	<input checked="" type="checkbox"/>	incomplete items	
FROM CERTIFIED MOULD	<input checked="" type="checkbox"/>			filling the cells with NO	

Insert the actual measurement in the cells marked as X

HULL WEIGHT (min 125kg)	130	MAST LENGTH (Rules C.9.2,F.3.4)	OK
TOTAL WEIGHT (min 172.8kg)	170.8	Limiting marks & pin	OK
CORRECTOR WEIGHTS (max 15kg)	2	Corrector weigths (max 100gr)	-
MOI X	271	BOOM LENGTH (max 2642mm)	OK
Spring set #	124	Limiting marks & pin	OK
JIB FITTING	280	POLE LENGTH (max 2642mm)	OK
(279-330mm hor. From Hull Datum Point)		RUDDER DIMENSIONS	OK
max 45mm vert. above sheerline)	X	Weight (min. 2.72kg)	OK
SHROUDS (1778-1981mm from HDP)	1778	Corrector weigths (Rule C.8.5)	-
MAST HOLE (min 1494-mm from HDP)	1486+8	Parallel to transom (tolerance 2mm)	OK
UPPER GUDGEON (Rule D.2.3)	410	DAGGERBOARD DIMENSIONS	OK
LOWER GUDGEON (Rule D.2.3)	155	Band (painted to 910 mm)	OK
GUDGEONS DIAMETER (Rule D.2.3)	8	Safety line (max 610mm long)	OK
	OK	Restraining system (hooks or tablet)	OK

Mark corrector weights position and amount below. Data to be copied on the Official Snipe Label



DATE MEASURED 03/06/2022

MEASURER'S STAMP

MEASURER'S NAME JOSE PEREZ MORALES



SCIRA MEASUREMENT DATA SHEET

Las medidas de rango están referidas al PLANO BASE REAL de la L 80/20

Owner: LUIS SOTO VALERO	Date: 03/06/2022
Hull: 31801	Builder: SINERGIA RG Material: GPR

Medido por: Jose Pérez Morales

Hull weight / Peso casco (min 125kg)	130
Total weight / Peso total (min 172.8kg)	170.8
Corrector weight / Lastre (max 15 kg)	2
MOI / Momento de inercia (max 271 kgm2)	271
Spring set / Muelles Nº	124

Chine / Pantoque

Station / Estación	Height / altura			Width / ancho		
	Starboard / Estribor	Port / Babor	Valor medio	Allowable range / Rango	Actual / medido	Allowable range / Rango
1	284	280	282	280-292	538	527-539
2	231	225	228	223/235	996	991-1003
3	208	204	206	197-209	1236	1232-1244
4	208	208	208	200-212	1273	1270-1282
5	243	242	242.5	242-254	1143	1137-1149
Transom / Espejo popa	312	312	312	312-324	953	953-965

Sheer / Cinton

Station / Estación	Height / altura			Width / ancho		
	Starboard / Estribor	Port / Babor	Valor Medio	Allowable range / Rango	Actual / medido	Allowable range / Rango
1	626	629	627.5	610-635	918	895-921
2	568	566	567	556-581	1361	1346-1372
3	543	535	539	528-553	1522	1511-1537
4	529	530	529.5	521-546	1484	1473-1499
5	537	539	538	521-546	1281	1270-1296
Transom / Espejo popa	562	562	562	553-578	1040	1022-1048

Keel / Quilla

Station / Estación	Height / altura		Width / ancho	
	Actual / medido	Allowable range / Rango	Actual / medido	Allowable range / Rango
400	223	223-235	--	NA
1	--	162	63	min 51
2	96	89-101	104	99-105
3	62	51-63	104	99-105
4	68	58-70	104	99-105
5	--	114	104	99-105
Transom / Espejo popa	166	166-178	104	99-105

Stem Offset / Perfil proa		
up from baseline (altura)	back from HDP / horiz. Desde proa	Actual /medido
267	267-279	267
305	194-206	195
337	153-165	153
381	108-120	108
457	54-66	54
527	26-38	26

Miscellaneous / Varios					
Measurement /Medida	Actual /medido	Allowable range / Rango	Measurement /Medida	Actual /medido	Allowable range / rango
LOA / Elora total	4735	4711-4737	Chine radius at st.1 / radio en E.1	OK	19
Horizontal transo offset /retranqueo espejo popa en quilla	205	203-229	Chine radius at st.2 / radio en E.2	OK	3
Hull Datum Point height/Altura Punto Origen	705	683-708	Deck height /Altura cubierta	112	Max 127
Bow radius/ Radio proa	OK	Max 25	Cockpit width / ancho bañera	OK	Max 1016

Topside Measurement / Cubierta					
Measurement /Medida	Actual /medido	Allowable range / Rango	Measurement /Medida	Actual /medido	Allowable range / Rango
Aft end of dagg. Slot from hull datum point /Borde post. orza a	2460	2438-2464	Heel point to sheer (vertical) Altura pie mastil a cinton	393	390-400
Top case parallel to baseline / paralelismo caja orza a plano base	OK	tolerance 2	Mast hole in deck / Agujero mastil cubierta	150 X 60	Max 256 x76
Aft edge of slot perpend. to baseline / Perp. Popa cajera a	OK	tolerance 2	Length of foredeck / Longitud cubierta proa	1843	Min 1842
Forward edge of slot perpend. to baseline / Idem proa	OK	tolerance 6	Length of aftdeck / longitud cubierta popa	OK	Min 457
Keel to top of daggerboardcase / altura cajera	310	310-313	Sheer strikes	32	Max 32
Length of daggerboard slot /Longitud cajera	540	Max 546	Gunwalwe radius	OK	Max 12
Width of daggerboard slot / ancho cajera	OK	Max 13	Splashboard / tajamar	53 X 800	Min51x610

Cartagena 3 de JUNIO 2022

El Medidor

01 SCIRA
MEASURER
SPAIN

