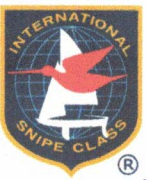


# Class Measurement Certificate



Hull Number 31812  
Year of Manufacturer 2024

Builder DBMARINE Model DB-R1

Weight 172,80 kgs

Mark corrector weights here

Corrector weights 9,50 kgs

Mast builder SW

Corrector weights ∅

MOI value 271,96

Owner ENRICO MICHEL

**04 SCIRA**  
**MEASURER**

Country ITALY

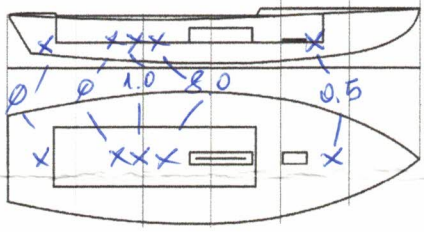
Measurer/s STEFANO LONGHI SCIRA stamp ITALY

This certificate is not valid until signed and stamped by the NS. This certificate indicates that the boat has a registered MDS on file in the SCIRA office.

Date of measurement 12/02/2024

National Secretary signature \_\_\_\_\_

I hereby agree to all SCIRA Rules and Bylaws. I agree to notify a SCIRA measurer if any equipment is modified, replaced and/or transferred to



# SNIFE CLASS RACING ASSOCIATION

## MEASUREMENT DATA SHEET FOR CERTIFIED BOATS

Revised February 2019

This page to be used for all boats. *For measurements in Italic refer to the Class Rules*

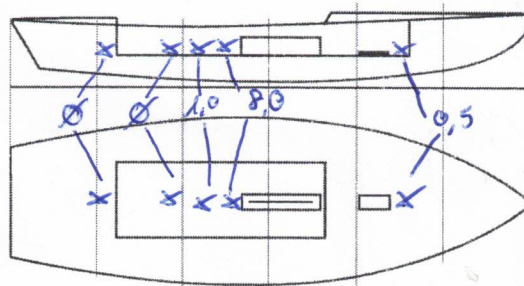
HULL NUMBER	31812	BUILDER	DB MARINE SAS
MODEL	DB-R1	YEAR OF MANUFACTURE	2024
OWNER	ENRICO MICHEL	COUNTRY	ITALY

BARE HULL	<input type="checkbox"/>	COMPLETE	<input checked="" type="checkbox"/>	INCOMPLETE	<input type="checkbox"/>
HULL MATERIAL: WOOD	<input type="checkbox"/>	FIBERGLASS	<input checked="" type="checkbox"/>	make note of	
DECK MATERIAL: WOOD	<input type="checkbox"/>	FIBERGLASS	<input checked="" type="checkbox"/>	incomplete items	
FROM CERTIFIED MOULD	<input checked="" type="checkbox"/>			filling the cells with <b>NO</b>	

HULL WEIGHT (min 125kg)	127,80	MAST LENGTH (Rules C.9.2, F.3.4)	6499
TOTAL WEIGHT (min 172.8kg)	172,80	Limiting marks & pin	<input checked="" type="checkbox"/>
CORRECTOR WEIGHTS (max 15kg)	9,50	Corrector weights (max 100gr)	NO
MOI	271,96	BOOM LENGTH (max 2642mm)	2627
Spring set #	126	Limiting marks & pin	<input checked="" type="checkbox"/>
JIB FITTING	281	POLE LENGTH (max 2642mm)	2641
(279-300mm hor. From Hull Datum Point)		RUDDER DIMENSIONS	<input checked="" type="checkbox"/>
max 45mm vert. above sheerline)		Weight (min. 2.72kg)	3,0
SHROUDS (1778-1981mm from HDP)	1778	Corrector weights (Rule C.8.5)	NO
MAST HOLE (min 1494-mm from HDP)	1494	Parallel to transom (tolerance 2mm)	<input checked="" type="checkbox"/>
UPPER GUDGEON (Rule D.2.3)	410	DAGGERBOARD DIMENSIONS	<input checked="" type="checkbox"/>
LOWER GUDGEON (Rule D.2.3)	155	Band	<input checked="" type="checkbox"/>
GUDGEONS DIAMETER (Rule D.2.3)	8mm	Safety line (max 610mm long)	<input checked="" type="checkbox"/>
		Restraining system (hooks or tablet)	<input checked="" type="checkbox"/>

Insert the **actual** measurement in the cells marked as

Mark corrector weights position and amount below. Data to be copied on the Official Snipe Label



DATE MEASURED 12/02/2024 MEASURER'S STAMP

MEASURER'S NAME STEFANO LONGHI

NOTES:

**04 SCIRA**  
MEASURER  
ITALY

### SCIRA Measurement Data Sheet

To be used with the 80/20 true baseline measurement frame

For boats built from January 1st, 2018. For older boats use the MDS in force in the year of manufacturing

Owner ENRICO MICHEL Date 12/02/2024

Hull 31812 Builder DB MARINE SAS Material FIBERGLASS

NEW MOULD: FIRST  OR  OF 5 CERTIFICATION RENEW  Y/N

DO NOT COMPLETE IF FROM A CERTIFIED MOULD

Chine						
	Height				Width	
Station	Starboard	Port	Total	Allowable Range	Actual	Allowable Range
1	420	420	840	838-864	533	527-540
2	364	362	726	724-749	998	991-1003
3	338	338	676	673-699	1234	1232-1245
4	336	349	685	680-705	1276	1270-1283
5	384	383	767	762-787	1140	1137-1149
Transom	453	458	911	902-927	960	952-965

Sheer						
	Height				Width	
Station	Starboard	Port	Total	Allowable Range	Actual	Allowable Range
1	766	776	1542	1499-1549	916	895-921
2	715	716	1431	1391-1441	1363	1346-1372
3	677	675	1352	1333-1384	1533	1511-1537
4	658	671	1329	1321-1372	1492	1473-1499
5	665	674	1339	1321-1372	1293	1270-1295
Transom	701	695	1396	1384-1435	1036	1022-1048

04 SCIRA  
 Snipe Class International Racing Association  
 STEFANO *Wanda* ITALY

HULL NR. 31812

Keel				
Station	Height		Width	
	Actual	Allowable Range	Actual	Allowable Range
400mm	225	223-235		
1	✓	162	83	Min 51
2	96	89-101	102	99-105
3	60	51-63	103	99-105
4	68	58-70	103	99-105
5	✓	114	103	99-105
Transom	171	166-168	103	99-105

Stem Offset		
up from baseline	back from HDP	Actual
267	267-279	278
305	194-206	195
337	153-165	158
381	108-120	111
457	54-66	63
527	26-38	33
311 to 387	intersection of chine extension	

Miscellaneous					
Measurement	Actual	Allowable Range	Measurement	Actual	Allowable Range
LOA	4734	4711-4737	Chine radius at st. 1	✓	Max 19
Horizontal transom offset	208	203-229	Chine radius st. 2 to transom	✓	Max 3
Hull Datum Point height	700	683-708	Deck height	100	Max 127
Bow radius	✓	Max 25			

Topside Measurements					
Measurement	Actual	Allowable Range	Measurement	Actual	Allowable Range
Aft end of dagg. slot from Hull datum point	2457	2438-2464	Mast step to sheer (vertical)	397	390-400
Top of case parallel to baseline	✓	tolerance 2	Mast hole in the deck	170x60	Max256x76
Aft edge of slot perpendicular to baseline	✓	tolerance 2	Length of foredeck	1865	Min 1842
Forward edge of slot perpendicular to baseline	✓	tolerance 6	Length of aft deck	1210	Min 457
Keel to top of daggerboard case	312	310-313	Sheer strikes	✓	Max 32
Length of daggerboard slot	525	Max 546	Gunwale radius	✓	Max 12
Width of daggerboard slot	12	Max 13	Splashboard	✓	Min 51 x 610

Measurer  
STEFANO LONGHI

Stamping SCIRA  
04 MEASURER  
Snipe Class International Racing Association