

SNIFE CLASS RACING ASSOCIATION

MEASUREMENT DATA SHEET FOR CERTIFIED BOATS

Revised February 2019

This page to be used for all boats. For measurements in Italic refer to the Class Rules

HULL NUMBER	31823	BUILDER	SINERGIA RG	
MODEL	B	YEAR OF MANUFACTURE	2023	
OWNER	ALBERTO MARTINEZ ALBALADEJO		COUNTRY	ESPAÑA

BARE HULL COMPLETE NCOMPLETE

HULL MATERIAL: WOOD

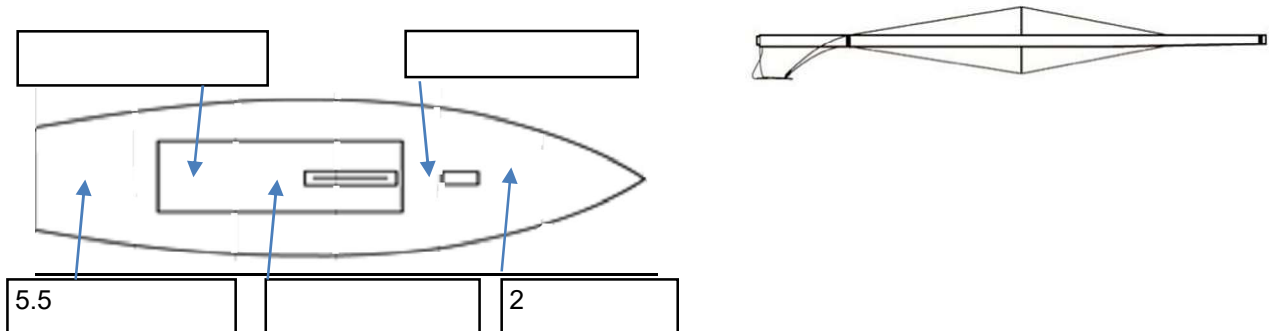
DECK MATERIAL: WOOD FIBERGLASS make note of incomplete items filling the cells with **NO**

FROM CERTIFIED MOULD FIBERGLASS

HULL WEIGHT (min 125kg)	125.5	MAST LENGTH (Rules C.9.2, F.3.4)	OK
TOTAL WEIGHT (min 172.8kg)	172.8	Limiting marks & pin	OK
CORRECTOR WEIGHTS (max 15kg)	7.5	Corrector weigths (max 100gr)	--
MOI	271	BOOM LENGTH (max 2642mm)	OK
Spring set #	124	Limiting marks & pin	OK
JIB FITTING	280	POLE LENGTH (max 2642mm)	OK
(279-330mm hor. From Hull Datum Point)		RUDDER DIMENSIONS	OK
max 45mm vert. above sheerline)		Weight (min. 2.72kg)	OK
SHROUDS (1778-1981mm from HDP)	1780	Corrector weigths (Rule C.8.5)	--
MAST HOLE (min 1494-mm from HDP)	1488+6	Parallel to transom (tolerance 2mm)	OK
UPPER GUDGEON (Rule D.2.3)	410	DAGGERBOARD DIMENSIONS	OK
LOWER GUDGEON (Rule D.2.3)	155	Band (see note 921 mm)	OK
GUDGEONS DIAMETER (Rule D.2.3)	8	Safety line (max 610mm long)	OK
		Restraining system (hooks or tablet)	OK

Insert the actual measurement in the cells marked as

Mark corrector weights position and amount below. Data to be copied on the Official Snipe Label



DATE MEASURED 11/04/2023 MEASURER'S STAMP

MEASURER'S NAME JOSE PEREZ MORALES



SCIRA MEASUREMENT DATA SHEET

Las medidas de rango están referidas al PLANO BASE REAL de la L 80/20

Owner: ALBERTO MARTINEZ ALBALADEJO

Hull: 31823

Builder: SINERGIA

Material: GPR

Date: 11/04/2023

Medido por: Jose Pérez Morales

Hull weight / Peso casco (min 125kg)	125.5
Total weight / Peso total (min 172.8kg)	172.8
Corrector weight / Lastre (max 15 kg)	7.5
MOI / Momento de inercia (min 271 kgm2)	271
Spring set / Muelles N ^o	124

Chine / Pantoque

Station / Estación	Height / altura				Width / ancho	
	Starboard /Estribor	Port / Babor	Valor medio	Allowable range / Rango	Actual /medido	Allowable range /Rango
1	281	282	281.5	280-292	537	527-539
2	225	231	228	223/235	996	991-1003
3	204	208	206	197-209	1236	1232-1244
4	208	210	209	200-212	1273	1270-1282
5	245	246	245.5	242-254	1144	1137-1149
Transom / Espejo popa	312	312	312	312-324	953	953-965

Sheer / Cinton

Station / Estación	Height / altura				Width / ancho	
	Starboard /Estribor	Port / Babor	Valor Medio	Allowable range / Rango	Actual /medido	Allowable range /Rango
1	630	632	631	610-635	913	895-921
2	571	573	572	556-581	1360	1346-1372
3	535	543	539	528-553	1522	1511-1537
4	530	535	532.5	521-546	1483	1473-1499
5	540	541	540.5	521-546	1282	1270-1296
Transom / Espejo popa	560	562	561	553-578	1040	1022-1048

Keel / Quilla

Station / Estación	Height / altura		Width / ancho	
	Actual /medido	Allowable range/Rango	Actual /medido	Allowable range/ Rango
400	223	223-235	64	NA
1	--	162	103	min 51
2	89	89-101	103	99-105
3	62	51-63	103	99-105
4	69	58-70	103	99-105
5	--	114	103	99-105
Transom /Espejo popa	166	166-178	103	99-105



Owner: ALBERTO MARTINEZ ALBALADEJO**Date:11/04/2023**

Stem Offset / Perfil proa		
up from baseline (altura)	back from HDP / horiz. Desde proa	Actual /medido
267	267-279	268
305	194-206	194
337	153-165	154
381	108-120	109
457	54-66	55
527	26-38	27

Miscellaneous / Varios					
Measurement /Medida	Actual /medido	Allowable range / Rango	Measurement /Medida	Actual /medido	Allowable range / rango
LOA / Elora total	4735	4711-4737	Chine radius at st.1 / radio en E.1	19	19
Horizontal transo offset /retranqueo espejo popa en quilla	206	203-229	Chine radius at st.2 / radio en E.2	3	3
Hull Datum Point height/Altura Punto Origen	705	683-708	Deck height /Altura cubierta	115	Max 127
Bow radius/ Radio proa	25	Max 25	Cockpit width / ancho bañera	860	Max 1016

Topside Measurement / Cubierta					
Measurement /Medida	Actual /medido	Allowable range / Rango	Measurement /Medida	Actual /medido	Allowable range / Rango
Aft end of dagg. Slot from hull datum point /Borde post. orza a	2460	2438-2464	Heel point to sheer (vertical) Altura pie mastil a cintón	392	390-400
Top case parallel to baseline / paralelismo caja orza a plano base	OK	tolerance 2	Mast hole in deck / Agujero mastil cubierta	150 X 60	Max 256 x76
Aft edge of slot perpend. to baseline / Perp. Popa cajera a	OK	tolerance 2	Length of foredeck / Longitud cubierta proa	1843	Min 1842
Forward edge of slot perpend. to baseline / Idem proa	OK	tolerance 6	Length of aftdeck / longitud cubierta popa	1842	Min 457
Keel to top of daggerboardcase / altura cajera	312	310-313	Sheer strikes	32	Max 32
Length of daggerboard slot /Longitud cajera	544	Max 546	Gunwalwe radius	12	Max 12
Width of daggerboard slot / ancho cajera	13	Max 13	Splashboard / tajamar	54 x 800	Min51x610

Cartagena 11 de abril 2023
El Medidor