

SNIFE CLASS RACING ASSOCIATION

MEASUREMENT DATA SHEET FOR CERTIFIED BOATS

Revised February 2019

This page to be used for all boats. For measurements in *Italic* refer to the Class Rules

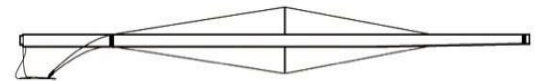
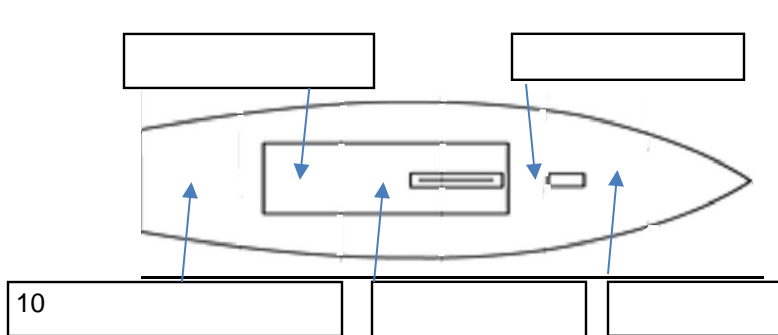
HULL NUMBER	31825	BUILDER	SINERGIA	
MODEL	B	YEAR OF MANUFACTURE	2022	
OWNER	SERGIO BARRIONUEVO	COUNTRY	ESPAÑA	

BARE HULL	<input type="checkbox"/>	COMPLETE	<input checked="" type="checkbox"/>	INCOMPLETE	<input type="checkbox"/>
HULL MATERIAL: WOOD	<input type="checkbox"/>	FIBERGLASS	<input checked="" type="checkbox"/>	make note of	
DECK MATERIAL: WOOD	<input type="checkbox"/>	FIBERGLASS	<input checked="" type="checkbox"/>	incomplete items	
FROM CERTIFIED MOULD	<input checked="" type="checkbox"/>			filling the cells with NO	

Insert the actual measurement in the cells marked as X

HULL WEIGHT (min 125kg)		MAST LENGTH (Rules C.9.2, F.3.4)	OK
TOTAL WEIGHT (min 172.8kg)	172.8	Limiting marks & pin	OK
CORRECTOR WEIGHTS (max 15kg)	10	Corrector weights (max 100gr)	NO
MOI	271	BOOM LENGTH (max 2642mm)	OK
Spring set #	124	Limiting marks & pin	OK
JIB FITTING	279	POLE LENGTH (max 2642mm)	OK
(279-330mm horFrom HullDatum Point)		RUDDER DIMENSIONS	OK
max 45mm vert. above sheerline)	X	Weight (min. 2.72kg)	OK
SHROUDS (1778-1981mm from HDP)		Corrector weights (Rule C.8.5)	NO
MAST HOLE (min 1494-mm from HDP)		Parallel to transom (tolerance 2mm)	OK
UPPER GUDGEON (Rule D.2.3)		DAGGERBOARD DIMENSIONS	OK
LOWER GUDGEON (Rule D.2.3)		Band (see note)	OK
GUDGEONS DIAMETER (Rule D.2.3)		Safety line (max 610mm long)	X
		Restraining system (hooks or tablet)	OK

Mark corrector weights position and amount below. Data to be copied on the Official Snipe Label



Note: the upper limit of the daggerboard band must be 907 mm from its lower limit
 DATE MEASURED _____ MEASURER'S STAMP _____

MEASURER'S NAME JOSE PEREZ MORALES



SCIRA MEASUREMENT DATA SHEET

Las medidas de rango están referidas al PLANO BASE REAL de la L 80/20

Owner: SERGIO BARRIONUEVO	Date: 29/11/2022
----------------------------------	-------------------------

Hull: Nº ESP 31825	Builder: SINERGIA	Material: GPR
---------------------------	--------------------------	----------------------

Medido por: Jose Pérez Morales

Hull weight / Peso casco (min 125kg)	--
Total weight / Peso total (min 172.8kg)	172.8
Corrector weight / Lastre (max 15 kg)	10.-
MOI / Momento de inercia (max 271 kgm2)	271
Spring set / Muelles Nº	124

Chine / Pantoque						
Station / Estación	Starboard / Estribor	Height / altura			Width / ancho	
		Port / Babor	Valor medio	Allowable range / Rango	Actual / medido	Allowable range / Rango
1				280-292		527-539
2				223/235		991-1003
3				197-209		1232-1244
4				200-212		1270-1282
5				242-254		1137-1149
Transom / Espejo popa				312-324		953-965

Sheer / Cinton						
Station / Estación	Starboard / Estribor	Height / altura			Width / ancho	
		Port / Babor	Valor Medio	Allowable range / Rango	Actual / medido	Allowable range / Rango
1				610-635		895-921
2				556-581		1346-1372
3				528-553		1511-1537
4				521-546		1473-1499
5				521-546		1270-1296
Transom / Espejo popa				553-578		1022-1048

Keel / Quilla				
Station / Estación	Height / altura		Width / ancho	
	Actual / medido	Allowable range / Rango	Actual / medido	Allowable range / Rango
400		223-235		NA
1		162		min 51
2		89-101		99-105
3		51-63		99-105
4		58-70		99-105
5		114		99-105
Transom / Espejo popa		166-178		99-105

Nº 31825

Date:29/11/2022

Stem Offset / Perfil proa		
up from baseline (altura)	back from HDP / horiz. Desde proa	Actual /medido
267	267-279	
305	194-206	
337	153-165	
381	108-120	
457	54-66	
527	26-38	

Miscellaneous / Varios					
Measurement /Medida	Actual /medido	Allowable range / Rango	Measurement /Medida	Actual /medido	Allowable range / rango
LOA / Elora total		4711-4737	Chine radius at st.1 / radio en E.1		19
Horizontal transo offset /retranqueo espejo popa en quilla		203-229	Chine radius at st.2 / radio en E.2		3
Hull Datum Point height/Altura Punto Origen		683-708	Deck height /Altura cubierta		Max 127
Bow radius/ Radio proa		Max 25	Cockpit width / ancho bañera		Max 1016

Topside Measurement / Cubierta					
Measurement /Medida	Actual /medido	Allowable range / Rango	Measurement /Medida	Actual /medido	Allowable range / Rango
Aft end of dagg. Slot from hull datum point /Borde post. orza a		2438-2464	Heel point to sheer (vertical) Altura pie mastil a cinton	392	390-400
Top case parallel to baseline / paralelismo caja orza a plano base		tolerance 2	Mast hole in deck / Agujero mastil cubierta		Max 256 x76
Aft edge of slot perpend. to baseline / Perp. Popa cajera a		tolerance 2	Length of foredeck / Longitud cubierta proa		Min 1842
Forward edge of slot perpend. to baseline / Idem proa		tolerance 6	Length of aftdeck / longitud cubierta popa		Min 457
Keel to top of daggerboardcase / altura cajera	313	310-313	Sheer strikes		Max 32
Length of daggerboard slot /Longitud cajera		Max 546	Gunwalwe radius		Max 12
Width of daggerboard slot / ancho cajera		Max 13	Splashboard / tajamar		Min51x610

Cartagena 29 de noviembre 2022

El Medidor

