

SNIFE CLASS RACING ASSOCIATION

MEASUREMENT DATA SHEET FOR CERTIFIED BOATS

Revised February 2019

This page to be used for all boats. *For measurements in Italic refer to the Class Rules*

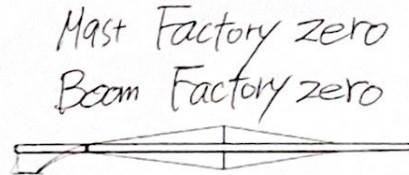
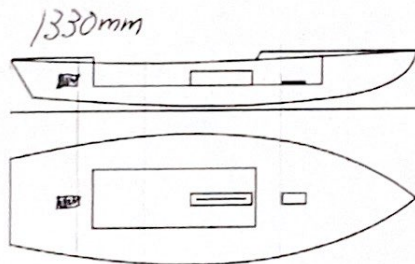
HULL NUMBER 31867 BUILDER TSUJIDO RACING
 MODEL TRC-1 YEAR OF MANUFACTURE 2023
 OWNER Kawasaki Heavy Industries, Ltd. COUNTRY Japan

BARE HULL COMPLETE INCOMPLETE
 HULL MATERIAL: WOOD FIBERGLASS make note of
 DECK MATERIAL: WOOD FIBERGLASS incomplete items
 FROM CERTIFIED MOULD filling the cells with **NO**

HULL WEIGHT (min 125kg)	<u>129.8</u>	MAST LENGTH (Rules C.9.2, F.3.4)	<u>1499</u>
TOTAL WEIGHT (min 172.8kg)	<u>172.8</u>	Limiting marks & pin	<input checked="" type="checkbox"/>
CORRECTOR WEIGHTS (max 15kg)	<u>8.02</u>	Corrector weights (max 100gr)	<input checked="" type="checkbox"/>
MOI	<u>271</u>	BOOM LENGTH (max 2642mm)	<u>2641</u>
Spring set #	<u>#95</u>	Limiting marks & pin	<input checked="" type="checkbox"/>
JIB FITTING	<u>280</u>	POLE LENGTH (max 2642mm)	<u>2641</u>
(279-330mm hor. From Hull Datum Point)		RUDDER DIMENSIONS	
max 45mm vert. above sheerline)		Weight (min. 2.72kg)	<u>2.72</u>
SHROUDS (1778-1981mm from HDP)	<u>1779</u>	Corrector weights (Rule C.8.5)	<u>0.08</u>
MAST HOLE (min 1494-mm from HDP)	<u>1496</u>	Parallel to transom (tolerance 2mm)	<input checked="" type="checkbox"/>
UPPER GUDGEON (Rule D.2.3)	<u>441</u>	DAGGERBOARD DIMENSIONS	
LOWER GUDGEON (Rule D.2.3)	<u>156</u>	Band	<input checked="" type="checkbox"/>
GUDGEONS DIAMETER (Rule D.2.3)	<u>8</u>	Safety line (max 610mm long)	<input checked="" type="checkbox"/>
		Restraining system (hooks or tablet)	<input checked="" type="checkbox"/>

Insert the **actual** measurement in the cells marked as

Mark corrector weights position and amount below. Data to be copied on the Official Snipe Label



DATE MEASURED 12-May-2023 MEASURER'S STAMP

MEASURER'S NAME Kuniko Yamada

NOTES:

04 SCIRA
MEASURER
JAPAN