

### SCIRA Measurement Data Sheet

To be used with the 80/20 true baseline measurement frame

For boats built from January 1st, 2018. For older boats use the MDS in force in the year of manufacturing

Owner RIKKYO UNIV. Date 11-July-2023  
 Hull 31869 Builder Persson Marine Japan Material FRP

NEW MOULD: FIRST  OR  OF 5 CERTIFICATION RENEW  Y/N

DO NOT COMPLETE IF FROM A CERTIFIED MOULD

Chine						
Station	Height			Width		
	Starboard	Port	Total	Allowable Range	Actual	Allowable Range
1	425	426	851	838-864	534	527-540
2	369	368	738	724-749	1003	991-1003
3	345	338	683	673-699	1240	1232-1245
4	349	346	695	680-705	1272	1270-1283
5	392	391	783	762-787	1140	1137-1149
Transom	457	456	913	902-927	952	952-965

Sheer						
Station	Height			Width		
	Starboard	Port	Total	Allowable Range	Actual	Allowable Range
1	769	764	1533	1499-1549	898	895-921
2	712	710	1422	1391-1441	1366	1346-1372
3	676	672	1348	1333-1384	1516	1511-1537
4	663	662	1325	1321-1372	1475	1473-1499
5	674	670	1344	1321-1372	1274	1270-1295
Transom	695	694	1389	1384-1435	1022	1022-1048

31869 RIKIYO UNIV.

Keel				
Station	Height		Width	
	Actual	Allowable Range	Actual	Allowable Range
400mm	223	223-235		
1		162	57	Min 51
2	100	89-101	102	99-105
3	63	51-63	102	99-105
4	69	58-70	102	99-105
5		114	102	99-105
Transom	167	166-178	102	99-105

Stem Offset		
up from baseline	back from HDP	Actual
267	267-279	272
305	194-206	194
337	153-165	155
381	108-120	111
457	54-66	58
527	26-38	29
311 to 387	intersection of chine extension	

Miscellaneous					
Measurement	Actual	Allowable Range	Measurement	Actual	Allowable Range
LOA	4716	4711-4737	Chine radius at st. 1		Max 19
Horizontal transom offset	226	203-229	Chine radius st. 2 to transom		Max 3
Hull Datum Point height	697	683-708	Deck height	110	Max 127
Bow radius		Max 25	Cockpit width	830	Max 1016

Topside Measurements					
Measurement	Actual	Allowable Range	Measurement	Actual	Allowable Range
Aft end of dagg. slot from Hull datum point	2458	2438-2464	Heel point to sheer (vertical)	391	390-400
Top of case parallel to baseline	1	tolerance 2	Mast hole in the deck	154x60	Max 256x76
Aft edge of slot perpendicular to baseline	1	tolerance 2	Length of foredeck	1847	Min 1842
Forward edge of slot perpendicular to baseline	1	tolerance 6	Length of aft deck	1238	Min 457
Keel to top of daggerboard case	311	310-313	Sheer strikes	31	Max 32
Length of daggerboard slot	535	Max 546	Gunwale radius		Max 12
Width of daggerboard slot	12	Max 13	Splashboard	54x60	Min 51 x 610

Measurer *Kuniko Yamada*Stamp nr. **04** SCIRA  
MEASURER  
JAPAN

# SNIFE CLASS RACING ASSOCIATION

## MEASUREMENT DATA SHEET FOR CERTIFIED BOATS

Revised February 2019

This page to be used for all boats. *For measurements in Italic refer to the Class Rules*

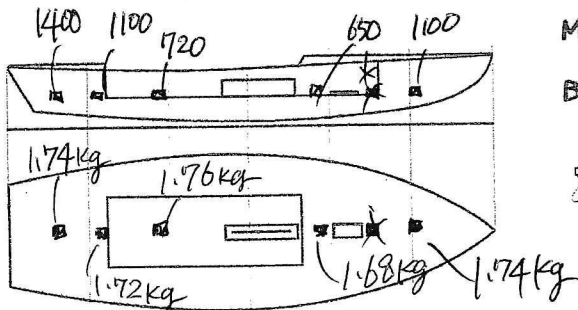
HULL NUMBER	31869	BUILDER	Persson Marine Japan
MODEL	NINJA 2	YEAR OF MANUFACTURE	2023
OWNER	RIKKYO UNIV.	COUNTRY	Japan

BARE HULL	<input type="checkbox"/>	COMPLETE	<input checked="" type="checkbox"/>	INCOMPLETE	<input type="checkbox"/>
HULL MATERIAL: WOOD	<input type="checkbox"/>	FIBERGLASS	<input checked="" type="checkbox"/>	make note of	
DECK MATERIAL: WOOD	<input type="checkbox"/>	FIBERGLASS	<input checked="" type="checkbox"/>	incomplete items	
FROM CERTIFIED MOULD	<input type="checkbox"/>			filling the cells with NO	

HULL WEIGHT (min 125kg)	125.46	MAST LENGTH (Rules C.9.2, F.3.4)	6499
TOTAL WEIGHT (min 172.8kg)	172.8	Limiting marks & pin	<input checked="" type="checkbox"/>
CORRECTOR WEIGHTS (max 15kg)	8.64	Corrector weights (max 100gr)	<input checked="" type="checkbox"/>
MOI	271	BOOM LENGTH (max 2642mm)	2641
Spring set #	#90	Limiting marks & pin	<input checked="" type="checkbox"/>
JIB FITTING	286	POLE LENGTH (max 2642mm)	2641
(279-330mm hor. From Hull Datum Point)		RUDDER DIMENSIONS	<input checked="" type="checkbox"/>
max 45mm vert. above sheerline)		Weight (min. 2.72kg)	2.74
SHROUDS (1778-1981mm from HDP)	1782	Corrector weights (Rule C.8.5)	0
MAST HOLE (min 1494-mm from HDP)	1494	Parallel to transom (tolerance 2mm)	<input checked="" type="checkbox"/>
UPPER GUDGEON (Rule D.2.3)	410	DAGGERBOARD DIMENSIONS	<input checked="" type="checkbox"/>
LOWER GUDGEON (Rule D.2.3)	155	Band	<input checked="" type="checkbox"/>
GUDGEONS DIAMETER (Rule D.2.3)	8	Safety line (max 610mm long)	<input checked="" type="checkbox"/>
		Restraining system (hooks or tablet)	<input checked="" type="checkbox"/>

Insert the actual measurement in the cells marked as

Mark corrector weights position and amount below. Data to be copied on the Official Snipe Label



MAST: Factory zero  
 BOOM: Factory zero



DATE MEASURED 11-July-2023 MEASURER'S STAMP

MEASURER'S NAME Kuniko Yamada

NOTES:

**04** SCIRA  
 MEASURER  
 JAPAN