

SCIRA Measurement Data Sheet

To be used with the 80/20 true baseline measurement frame

For boats built from January 1st, 2018. For older boats use the MDS in force in the year of manufacturing

Owner Miguel Pessanha **Date** Dec 6th, 2023
Hull 31891 **Builder** Zeltic **Material** Fiberglass

NEW MOULD: FIRST OR OF 5 CERTIFICATION RENEW Y/N

DO NOT COMPLETE IF FROM A CERTIFIED MOULD

Chine						
	Height				Width	
Station	Starboard	Port	Total	Allowable Range	Actual	Allowable Range
1	436	426	862	838-864	540	527-540
2	377	363	740	724-749	1000	991-1003
3	350	326	676	673-699	1240	1232-1245
4	352	331	383	680-705	1277	1270-1283
5	398	372	770	762-787	1149	1137-1149
Transom	442	461	903	902-927	965	952-965

Sheer						
	Height				Width	
Station	Starboard	Port	Total	Allowable Range	Actual	Allowable Range
1	780	766	1546	1499-1549	921	895-921
2	726	705	1431	1391-1441	1369	1346-1372
3	690	666	1356	1333-1384	1528	1511-1537
4	680	656	1336	1321-1372	1493	1473-1499
5	689	665	1354	1321-1372	1289	1270-1295
Transom	710	687	1397	1384-1435	1022	1022-1048

Keel				
Station	Height		Width	
	Actual	Allowable Range	Actual	Allowable Range
400mm	225	223-235		
1		162	94	Min 51
2	98	89-101	103	99-105
3	61	51-63	102	99-105
4	70	58-70	102	99-105
5		114	102	99-105
Transom	166	166-178	103	99-105

Stem Offset		
up from baseline	back from HDP	Actual
267	267-279	269
305	194-206	195
337	153-165	152
381	108-120	109
457	54-66	56
527	26-38	27
311 to 387	intersection of chine extension	Ok

Miscellaneous					
Measurement	Actual	Allowable Range	Measurement	Actual	Allowable Range
LOA	4730	4711-4737	Chine radius at st. 1	Ok	Max 19
Horizontal transom offset	204	203-229	Chine radius st. 2 to transom	Ok	Max 3
Hull Datum Point height	706	683-708	Deck height	121	Max 127
Bow radius	Ok	Max 25	Cockpit width	830	Max 1016

Topside Measurements					
Measurement	Actual	Allowable Range	Measurement	Actual	Allowable Range
Aft end of dagg. slot from Hull datum point	2444	2438-2464	Heel point to sheer (vertical)	390	390-400
Top of case parallel to baseline	Ok	tolerance 2	Mast hole in the deck	152 x 62	Max 256x76
Aft edge of slot perpendicular to baseline	Ok	tolerance 2	Length of foredeck	1844	Min 1842
Forward edge of slot perpendicular to baseline	Ok	tolerance 6	Length of aft deck	1220	Min 457
Keel to top of daggerboard case	310	310-313	Sheer strikes	32	Max 32
Length of daggerboard slot	545	Max 546	Gunwale radius	Ok	Max 12
Width of daggerboard slot	12	Max 13	Splashboard	Ok	Min 51 x 610


 Measurer
Fernando Tajuelo

03 SCIRA
MEASURER
Stamp nr. SPAIN

SNIFE CLASS RACING ASSOCIATION

MEASUREMENT DATA SHEET FOR CERTIFIED BOATS

Revised February 2019

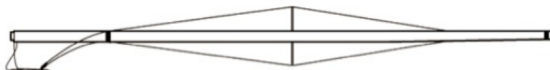
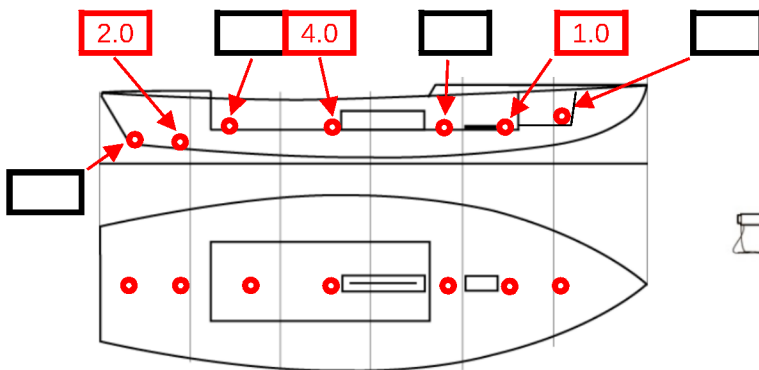
This page to be used for all boats. For measurements in Italic refer to the Class Rules

HULL NUMBER	31891	BUILDER	Zeltic
MODEL	Zeltic	YEAR OF MANUFACTURE	2023
OWNER	Miguel Pessanha	COUNTRY	España

BARE HULL	<input type="checkbox"/>	COMPLETE	<input checked="" type="checkbox"/>	INCOMPLETE	<input type="checkbox"/>
HULL MATERIAL: WOOD	<input type="checkbox"/>	FIBERGLASS	<input checked="" type="checkbox"/>	make note of	
DECK MATERIAL: WOOD	<input type="checkbox"/>	FIBERGLASS	<input checked="" type="checkbox"/>	incomplete items	
FROM CERTIFIED MOULD	<input checked="" type="checkbox"/>			filling the cells with NO	

HULL WEIGHT (min 125kg)	140.1	MAST LENGTH (Rules C.9.2, F.3.4)	6499
TOTAL WEIGHT (min 172.8kg)	173.1	Limiting marks & pin	Ok
CORRECTOR WEIGHTS (max 15kg)	7	Corrector weights (max 100gr)	0
MOI	272	BOOM LENGTH (max 2642mm)	2585
Spring set #	130	Limiting marks & pin	Ok
JIB FITTING	Ok / 280	POLE LENGTH (max 2642mm)	2642
(279-330mm hor. From Hull Datum Point)		RUDDER DIMENSIONS	Ok
max 45mm vert. above sheerline)		Weight (min. 2.72kg)	2.98
SHROUDS (1778-1981mm from HDP)	1778	Corrector weights (Rule C.8.5)	0
MAST HOLE (min 1494-mm from HDP)	1494	Parallel to transom (tolerance 2mm)	Ok
UPPER GUDGEON (Rule D.2.3)	411	DAGGERBOARD DIMENSIONS	Ok
LOWER GUDGEON (Rule D.2.3)	154	Band	Ok
GUDGEONS DIAMETER (Rule D.2.3)	8.1	Safety line (max 610mm long)	Ok
		Restraining system (hooks or tablet)	Ok

Insert the actual measurement in the cells marked as
 Mark corrector weights position and amount below. Data to be copied on the Official Snipe Label



03 SCIRA
MEASURER
SPAIN

DATE MEASURED 6. Dec. 2013 MEASURER'S STAMP

MEASURER'S NAME Fernando Tajuelo Gil

NOTES:

Mast hole distance complies with a 16 mm thick plate