

SNIFE CLASS RACING ASSOCIATION

MEASUREMENT DATA SHEET FOR CERTIFIED BOATS

Revised February 2019

This page to be used for all boats. For measurements in Italic refer to the Class Rules

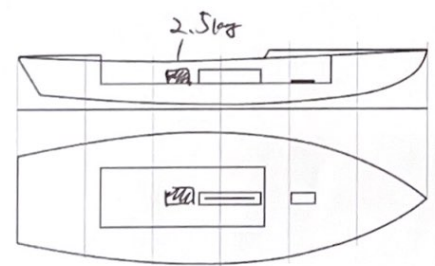
HULL NUMBER	31885	BUILDER	TSUJIOO RACING
MODEL	TRC-1	YEAR OF MANUFACTURE	2024
OWNER	Seijo Univ.	COUNTRY	JAPAN

BARE HULL	<input type="checkbox"/>	COMPLETE	<input checked="" type="checkbox"/>	INCOMPLETE	<input type="checkbox"/>
HULL MATERIAL: WOOD	<input type="checkbox"/>	FIBERGLASS	<input checked="" type="checkbox"/>	make note of	
DECK MATERIAL: WOOD	<input type="checkbox"/>	FIBERGLASS	<input checked="" type="checkbox"/>	incomplete items	
FROM CERTIFIED MOULD	<input type="checkbox"/>	filling the cells with NO			

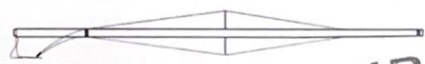
HULL WEIGHT (min 125kg)	132.92	MAST LENGTH (Rules C.9.2, F.3.4)	6495
TOTAL WEIGHT (min 172.8kg)	172.9	Limiting marks & pin	<input checked="" type="checkbox"/>
CORRECTOR WEIGHTS (max 15kg)	2.5	Corrector weights (max 100gr)	OK
MOI	282.1	BOOM LENGTH (max 2642mm)	2639
Spring set #	#120	Limiting marks & pin	<input checked="" type="checkbox"/>
JIB FITTING	279	POLE LENGTH (max 2642mm)	2637
(279-330mm hor. From Hull Datum Point)		RUDDER DIMENSIONS	
max 45mm vert. above sheerline)		Weight (min. 2.72kg)	272
SHROUDS (1778-1981mm from HDP)	1786	Corrector weights (Rule C.8.5)	<input checked="" type="checkbox"/>
MAST HOLE (min 1494-mm from HDP)	1496	Parallel to transom (tolerance 2mm)	<input checked="" type="checkbox"/>
UPPER GUDGEON (Rule D.2.3)	408	DAGGERBOARD DIMENSIONS	
LOWER GUDGEON (Rule D.2.3)	153	Band	
GUDGEONS DIAMETER (Rule D.2.3)	8-1	Safety line (max 610mm long)	
		Restraining system (hooks or tablet)	

Insert the **actual** measurement in the cells marked as

Mark corrector weights position and amount below. Data to be copied on the Official Snipe Label



MAST. Factory Zero
BOOM Factory Zero



01 SCIRA
MEASURER
JAPAN

DATE MEASURED 22-Jan-2024 MEASURER'S STAMP

MEASURER'S NAME M. Seio

NOTES:

2024/1/22

SCIRA Measurement Data Sheet

To be used with the 80/20 true baseline measurement frame

For boats built from January 1st, 2018. For older boats use the MDS in force in the year of manufacturing

Owner _____ Date _____

Hull _____ Builder _____ Material _____

NEW MOULD: FIRST OR OF 5 CERTIFICATION RENEW Y/N

DO NOT COMPLETE IF FROM A CERTIFIED MOULD

Chine						
Station	Height			Width		
	Starboard	Port	Total	Allowable Range	Actual	Allowable Range
1	428	448 448	846	838-864	527	527-540
2	377	364	741	724-749	991	991-1003
3	346	332	678	673-699	1233	1232-1245
4	353	338	691	680-705	1279	1270-1283
5	388	378	766	762-787	1144	1137-1149
Transom	454	449	903	902-927	959	952-965

Sheer						
Station	Height			Width		
	Starboard	Port	Total	Allowable Range	Actual	Allowable Range
1	786	763	1539	1499-1549	901	895-921
2	722	706	1428	1391-1441	1369	1346-1372
3	588	671	1359	1333-1384	1537	1511-1537
4	578	668	1346	1321-1372	1494	1473-1499
5	575	668	1343	1321-1372	1274	1270-1295
Transom	703	696	1399	1384-1435	1033	1022-1048

2024/1/22

Keel				
Station	Height		Width	
	Actual	Allowable Range	Actual	Allowable Range
400mm	223	223-235		
1		162	67	Min 51
2	101	89-101	101	99-105
3	63	51-63	101	99-105
4	62	58-70	101	99-105
5		114	101	99-105
Transom	167	166-178	101	99-105

Stem Offset		
up from baseline	back from HDP	Actual
267	267-279	267
305	194-206	199
337	153-165	156
381	108-120	110'
457	54-66	56
527	26-38	29
311 to 387	intersection of chine extension	

Miscellaneous					
Measurement	Actual	Allowable Range	Measurement	Actual	Allowable Range
LOA	4737	4711-4737	Chine radius at st. 1		Max 19
Horizontal transom offset	203	203-229	Chine radius st. 2 to transom		Max 3
Hull Datum Point height	707	683-708	Deck height	109.5	Max 127
Bow radius		Max 25	Cockpit width	700	Max 1016

Topside Measurements					
Measurement	Actual	Allowable Range	Measurement	Actual	Allowable Range
Aft end of dagg. slot from Hull datum point	2456	2438-2464	Heel point to sheer (vertical)	396.5	390-400
Top of case parallel to baseline	0	tolerance 2	Mast hole in the deck	150 x 60	Max 256x76
Aft edge of slot perpendicular to baseline	0	tolerance 2	Length of foredeck	1857	Min 1842
Forward edge of slot perpendicular to baseline	0	tolerance 6	Length of aft deck	1095	Min 457
Keel to top of daggerboard case	312	310-313	Sheer strikes	32	Max 32
Length of daggerboard slot	520	Max 546	Gunwale radius		Max 12
Width of daggerboard slot	10	Max 13	Splashboard	51 x 610	Min 51 x 610

Measurer

Stamp nr.