

SNIFE CLASS RACING ASSOCIATION

MEASUREMENT DATA SHEET FOR CERTIFIED BOATS

Revised February 2019

This page to be used for all boats. For measurements in Italic refer to the Class Rules

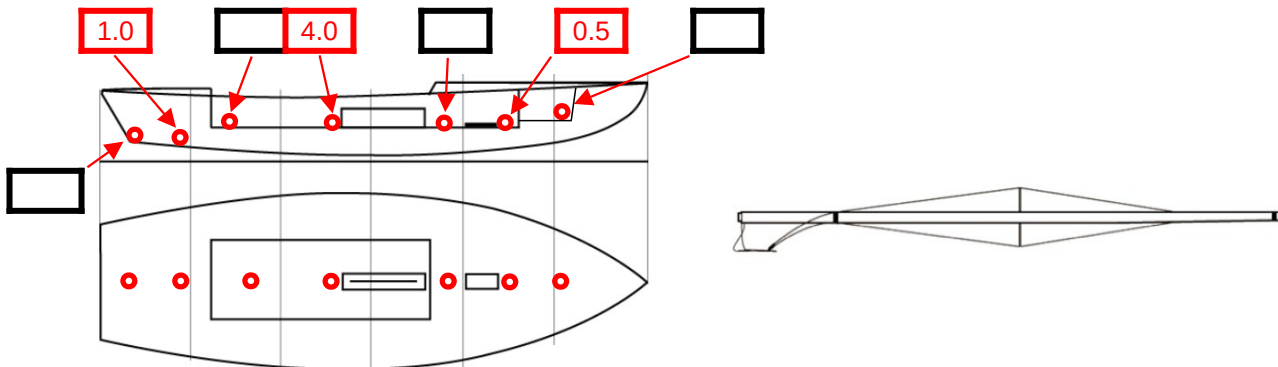
HULL NUMBER	31940	BUILDER	Zeltic
MODEL	Zeltic	YEAR OF MANUFACTURE	2024
OWNER	Comisión Naval de Regatas de la	COUNTRY	España

BARE HULL	<input type="checkbox"/>	COMPLETE	<input checked="" type="checkbox"/>	INCOMPLETE	<input type="checkbox"/>
HULL MATERIAL: WOOD	<input type="checkbox"/>	FIBERGLASS	<input checked="" type="checkbox"/>	make note of	
DECK MATERIAL: WOOD	<input type="checkbox"/>	FIBERGLASS	<input checked="" type="checkbox"/>	incomplete items	
FROM CERTIFIED MOULD	<input checked="" type="checkbox"/>			filling the cells with NO	

HULL WEIGHT (min 125kg)	135.4	MAST LENGTH (Rules C.9.2, F.3.4)	6499
TOTAL WEIGHT (min 172.8kg)	172.8	Limiting marks & pin	Ok
CORRECTOR WEIGHTS (max 15kg)	5.5	Corrector weights (max 100gr)	0
MOI	272	BOOM LENGTH (max 2642mm)	2585
Spring set #	130	Limiting marks & pin	Ok
JIB FITTING	Ok / 280	POLE LENGTH (max 2642mm)	2642
(279-330mm hor. From Hull Datum Point)		RUDDER DIMENSIONS	
max 45mm vert. above sheerline)		Weigth (min. 2.72kg)	3.1
SHROUDS (1778-1981mm from HDP)	1780	Corrector weights (Rule C.8.5)	0
MAST HOLE (min 1494-mm from HDP)	1494	Parallel to transom (tolerance 2mm)	
UPPER GUDGEON (Rule D.2.3)	409	DAGGERBOARD DIMENSIONS	
LOWER GUDGEON (Rule D.2.3)	153	Band	
GUDGEONS DIAMETER (Rule D.2.3)	8.1	Safety line (max 610mm long)	
		Restraining system (hooks or tablet)	

Insert the actual measurement in the cells marked as

Mark corrector weights position and amount below. Data to be copied on the Official Snipe Label



DATE MEASURED 26. May. 2024 MEASURER'S STAMP

MEASURER'S NAME Fernando Tajuelo Gil

NOTES:

Mast hole distance complies with a 10 mm thick plate

Fernando Tajuelo Gil

03 SCIRA
MEASURER
SPAIN