

SNIFE CLASS RACING ASSOCIATION

MEASUREMENT DATA SHEET FOR CERTIFIED BOATS

Revised February 2019

This page to be used for all boats. For measurements in Italic refer to the Class Rules

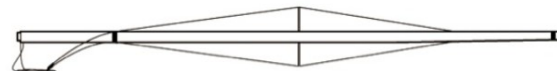
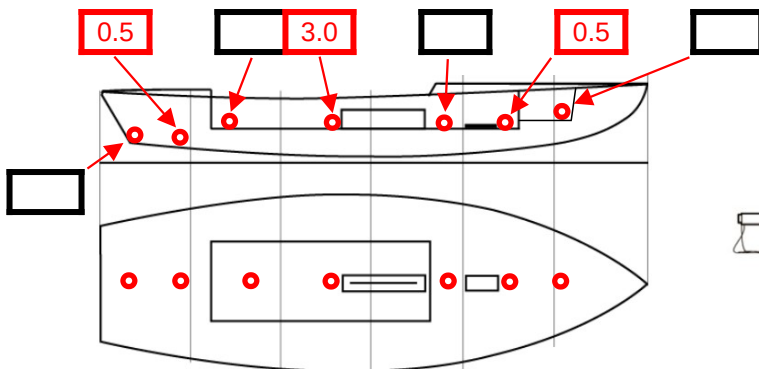
HULL NUMBER	31954	BUILDER	Zeltic
MODEL	Zeltic	YEAR OF MANUFACTURE	2024
OWNER	Comisión Naval de Regatas de la	COUNTRY	España

BARE HULL	<input type="checkbox"/>	COMPLETE	<input checked="" type="checkbox"/>	INCOMPLETE	<input type="checkbox"/>
HULL MATERIAL: WOOD	<input type="checkbox"/>	FIBERGLASS	<input checked="" type="checkbox"/>	make note of	
DECK MATERIAL: WOOD	<input type="checkbox"/>	FIBERGLASS	<input checked="" type="checkbox"/>	incomplete items	
FROM CERTIFIED MOULD	<input checked="" type="checkbox"/>			filling the cells with NO	

HULL WEIGHT (min 125kg)	137.2	MAST LENGTH (Rules C.9.2, F.3.4)	6499
TOTAL WEIGHT (min 172.8kg)	173.2	Limiting marks & pin	Ok
CORRECTOR WEIGHTS (max 15kg)	4	Corrector weights (max 100gr)	0
MOI	271	BOOM LENGTH (max 2642mm)	2585
Spring set #	130	Limiting marks & pin	Ok
JIB FITTING	Ok / 279	POLE LENGTH (max 2642mm)	2642
(279-330mm hor. From Hull Datum Point)		RUDDER DIMENSIONS	Ok
max 45mm vert. above sheerline)		Weight (min. 2.72kg)	3.212
SHROUDS (1778-1981mm from HDP)	1780	Corrector weights (Rule C.8.5)	0
MAST HOLE (min 1494-mm from HDP)	1494	Parallel to transom (tolerance 2mm)	Ok
UPPER GUDGEON (Rule D.2.3)	408	DAGGERBOARD DIMENSIONS	Ok
LOWER GUDGEON (Rule D.2.3)	152	Band	Ok
GUDGEONS DIAMETER (Rule D.2.3)	8.1	Safety line (max 610mm long)	Ok
		Restraining system (hooks or tablet)	Ok

Insert the actual measurement in the cells marked as

Mark corrector weights position and amount below. Data to be copied on the Official Snipe Label



DATE MEASURED 5. Dec. 2024

MEASURER'S STAMP

03 SCIRA
MEASURER
SPAIN

MEASURER'S NAME Fernando Tajuelo Gil

NOTES:

Mast hole distance complies with a 12 mm thick plate

SCIRA Measurement Data Sheet

To be used with the 80/20 true baseline measurement frame

For boats built from January 1st, 2018. For older boats use the MDS in force in the year of manufacturing

Owner Comisión Naval de Regatas de la Armada Date 5.Dec.2024
 Hull 31954 Builder Zeltic Material GRP

NEW MOULD: FIRST OR OF 5 CERTIFICATION RENEW Y Y/N

DO NOT COMPLETE IF FROM A CERTIFIED MOULD

Chine						
	Height				Width	
Station	Starboard	Port	Total	Allowable Range	Actual	Allowable Range
1	438	425	863	838-864	539	527-540
2	382	362	744	724-749	999	991-1003
3	357	328	685	673-699	1239	1232-1245
4	359	329	688	680-705	1277	1270-1283
5	396	373	769	762-787	1147	1137-1149
Transom	461	442	903	902-927	965	952-965

Sheer						
	Height				Width	
Station	Starboard	Port	Total	Allowable Range	Actual	Allowable Range
1	784	760	1544	1499-1549	921	895-921
2	730	699	1429	1391-1441	1364	1346-1372
3	695	662	1357	1333-1384	1531	1511-1537
4	686	655	1341	1321-1372	1491	1473-1499
5	693	664	1357	1321-1372	1288	1270-1295
Transom	708	696	1404	1384-1435	1026	1022-1048

Keel				
Station	Height		Width	
	Actual	Allowable Range	Actual	Allowable Range
400mm	223	223-235		
1		162	94	Min 51
2	99	89-101	102	99-105
3	61	51-63	102	99-105
4	70	58-70	102	99-105
5		114	102	99-105
Transom	166	166-178	105	99-105

Stem Offset		
up from baseline	back from HDP	Actual
267	267-279	268
305	194-206	195
337	153-165	153
381	108-120	108
457	54-66	57
527	26-38	28
311 to 387	intersection of chine extension	

Ok

Miscellaneous					
Measurement	Actual	Allowable Range	Measurement	Actual	Allowable Range
LOA	4731	4711-4737	Chine radius at st. 1	Ok	Max 19
Horizontal transom offset	203	203-229	Chine radius st. 2 to transom	Ok	Max 3
Hull Datum Point height	704	683-708	Deck height	121	Max 127
Bow radius	Ok	Max 25	Cockpit width	850	Max 1016

Topside Measurements					
Measurement	Actual	Allowable Range	Measurement	Actual	Allowable Range
Aft end of dagg. slot from Hull datum point	2446	2438-2464	Heel point to sheer (vertical)	394	390-400
Top of case parallel to baseline	0	tolerance 2	Mast hole in the deck	140 x 61	Max 256x76
Aft edge of slot perpendicular to baseline	Ok	tolerance 2	Length of foredeck	1844	Min 1842
Forward edge of slot perpendicular to baseline	Ok	tolerance 6	Length of aft deck	1210	Min 457
Keel to top of daggerboard case	310	310-313	Sheer strikes	32	Max 32
Length of daggerboard slot	545	Max 546	Gunwale radius	Ok	Max 12
Width of daggerboard slot	19	Max 13	Splashboard	Ok	Min 51 x 610


 Measurer
 Fernando Tajuelo

03 SCIRA
 MEASURER
 SPAIN
 Stamp nr.