

## SNIFE CLASS RACING ASSOCIATION

MEASUREMENT DATA SHEET FOR CERTIFIED BOATS

Revised February 2019

This page to be used for all boats. For measurements in *Italic* refer to the Class Rules

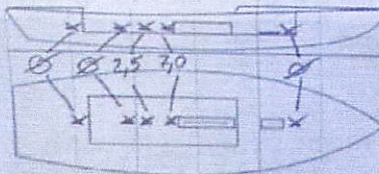
HULL NUMBER	32003	BUILDER	MAS GROUP SRL
MODEL	DB-R1	YEAR OF MANUFACTURE	2025
OWNER	JOOST HOWELING	COUNTRY	NEB

BARE HULL	<input type="checkbox"/>	COMPLETE	<input checked="" type="checkbox"/>	INCOMPLETE	<input type="checkbox"/>
HULL MATERIAL: WOOD	<input type="checkbox"/>	FIBERGLASS	<input checked="" type="checkbox"/>	make note of	
DECK MATERIAL: WOOD	<input type="checkbox"/>	FIBERGLASS	<input checked="" type="checkbox"/>	incomplete items	
FROM CERTIFIED MOULD	<input checked="" type="checkbox"/>			filling the cells with NO	

HULL WEIGHT (min 125kg)	128,10	MAST LENGTH (Rules C.9.2, F.3.4)	6499	SW GOLD
TOTAL WEIGHT (min 172.8kg)	172,90	Limiting marks & pin		✓
CORRECTOR WEIGHTS (max 15kg)	9,90	Corrector weights (max 100gr)	60	
MOI	271,65	BOOM LENGTH (max 2642mm)	2629	
Spring set #	126	Limiting marks & pin		✓
JIB FITTING	282	POLE LENGTH (max 2642mm)	2640	
(279-330mm hor. From Hull Datum Point)		RUDDER DIMENSIONS		✓
max 45mm vert. above sheerline)		Weight (min. 2.72kg)	3,60	
SHROUDS (1778-1981mm from HDP)	1279	Corrector weights (Rule C.8.5)	NO	
MAST HOLE (min 1494mm from HDP)	1494	Parallel to transom (tolerance 2mm)		✓
UPPER GUDGEON (Rule D.2.3)	409	DAGGERBOARD DIMENSIONS		✓
LOWER GUDGEON (Rule D.2.3)	155	Band		✓
GUDGEONS DIAMETER (Rule D.2.3)	8mm	Safety line (max 610mm long)		✓
		Restraining system (hooks or tablet)		✓

Insert the **actual** measurement in the cells marked as

Mark corrector weights position and amount below. Data to be copied on the Official Snipe Label



DATE MEASURED 29/07/2025 MEASURER'S STAMP

MEASURER'S NAME NICHEL ENRICO

NOTES:

10 SCIRA  
Snipe Class International  
MEASURER  
ITALY

134,6 - 162,4  
0,6 - 134,0



Snipe Class International Racing Association  
**Class Measurement Certificate**

Hull Number 32003  
Year of Manufacturer 2025

Builder MAS GROUP Model DB-R1

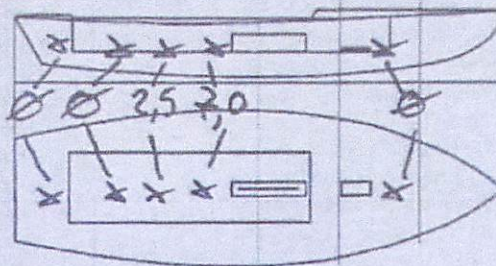
Weight 172,90 Mark corrector weights here

Corrector weights 9,50

Mast builder PMB

Corrector weights NO

MOI value 271,65



Owner  
JOOST HOWELING

Country NED

Masurer/s NICHEL ENRICO SCIRA stamp # 10

**SCIRA**  
**MEASURER**  
**ITALY**

This certificate is not valid until signed and stamped by the NS.  
This certificate indicates that the boat has a registered MDS on file  
in the SCIRA office.

Date of measurement 29/07/2025

National Secretary signature \_\_\_\_\_

*I hereby agree to all SCIRA Rules and Bylaws. I agree to notify a SCIRA measurer if any equipment is modified, replaced and/or transferred to proceed to a new measurement. SCIRA reserves the right to measure this boat and any equipment at any time.*

Owner signature \_\_\_\_\_

Date \_\_\_\_\_

**THIS CERTIFICATE REMAINS WITH THE OWNER OF THIS SNIPE.  
IT CAN BE REPLACED BY REMEASUREMENT**

HULL NR. 32003

SCIRA MDS Rev. "J-d" - July 2019

### SCIRA Measurement Data Sheet

To be used with the 80/20 true baseline measurement frame

For boats built from January 1st, 2018. For older boats use the MDS in force in the year of manufacturing

Owner JOOST HOWELING Date 29/07/2025

Hull 32003 Builder MAS GRUOP SRL Material FIBERGLASS

NEW MOULD: FIRST  OR  OF 5 CERTIFICATION RENEW  Y/N

DO NOT COMPLETE IF FROM A CERTIFIED MOULD

Station	Height			Width		
	Starboard	Port	Total	Allowable Range	Actual	Allowable Range
1				838-864		527-540
2				724-749		991-1003
3				673-699		1232-1245
4				680-705		1270-1283
5				762-787		1137-1149
Transom				902-927		952-965

Station	Height			Width		
	Starboard	Port	Total	Allowable Range	Actual	Allowable Range
1				1499-1549		895-921
2				1391-1441		1246-1272
3				1333-1384		1511-1537
4				1321-1372		1473-1499
5				1321-1372		1270-1295
Transom				1384-1435		1022-1048

MEASURER: ENRICO MICHEL

Snipe Class International Racing Association  
**10 SCIRA MEASUREMENT ITALY**

HULL NR. 32003

SCIRA MDS Rev. "3-d" - July 2019

Keel				
Station	Height		Width	
	Actual	Allowable Range	Actual	Allowable Range
400mm		223-235		
1		162		Min 51
2		89-101		99-105
3		51-63		99-105
4		58-70		99-105
5		114		99-105
Transom		166-178		99-105

Stem Offset		
up from baseline	back from HOP	Actual
267	267-279	
305	194-206	
337	153-165	
381	108-120	
457	54-66	
527	26-38	
311 to 387	Intersection of chine extension	

Miscellaneous					
Measurement	Actual	Allowable Range	Measurement	Actual	Allowable Range
LOA		4711-4737	Chine radius at st. 1		Max 19
Horizontal transom offset		203-229	Chine radius st. 2 to transom		Max 3
Hull Datum Point height		682-708	Deck height		Max 127
Bow radius		Max 25	Cockpit width		Max 1015

Topside Measurements					
Measurement	Actual	Allowable Range	Measurement	Actual	Allowable Range
Aft end of dagger slot from Hull datum point		2438-2464	Heel point to sheer (vertical)	395	390-400
Top of case parallel to baseline		tolerance 2	Mast hole in the deck	170x60	Max 256x76
Aft edge of slot perpendicular to baseline		tolerance 2	Length of foredeck	✓	Min 1842
Forward edge of slot perpendicular to baseline		tolerance 6	Length of aft deck	✓	Min 457
Keel to top of dangerboard case	342	310-313	Sheer strikes	✓	Max 32
Length of daggerboard slot	520	Max 546	Gunwale radius		Max 12
Width of daggerboard slot	12	Max 13	Splashboard	✓	Min 51 x 610

Measurer  
MICHEL ENRICO

Stamp of SCIRA MEASURER ITALY  
Snipe Class International Racing Association

Handwritten notes: 142, 6=, 134, 0, 9