



# Snipe Class International Racing Association Class Measurement Certificate

Hull Number 32008  
Year of Manufacturer 2025

Builder MAS GROUP Model DB-R1

Weight 172,80

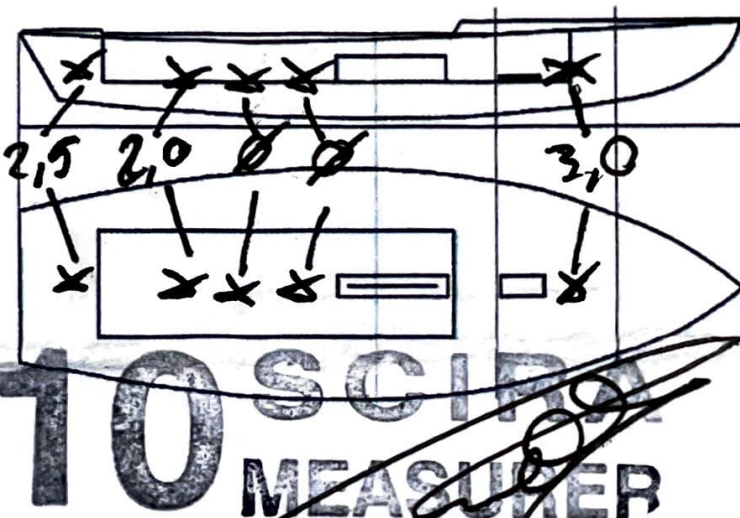
Mark corrector weights here

Corrector weights 7,5

Mast builder PMB

Corrector weights NO

MOI value 271,032



Owner AUGIR DIAZ

Country USA

Measurer/s MICHAEL ENRICO SCIRA stamp # IT09

This certificate is not valid until signed and stamped by the NS. This certificate indicates that the boat has a registered MDS on file in the SCIRA office.

Date of measurement 23/06/25

National Secretary signature \_\_\_\_\_

*I hereby agree to all SCIRA Rules and Bylaws. I agree to notify a SCIRA measurer if any equipment is modified, replaced and/or transferred to proceed to a new measurement. SCIRA reserves the right to measure this boat and any equipment at any time.*

Owner signature \_\_\_\_\_

Date \_\_\_\_\_

**THIS CERTIFICATE REMAINS WITH THE OWNER OF THIS SNIPE.  
IT CAN BE REPLACED BY REMEASUREMENT**

# SNIPE CLASS RACING ASSOCIATION

## MEASUREMENT DATA SHEET FOR CERTIFIED BOATS

Revised February 2019

This page to be used for all boats. *For measurements in Italic refer to the Class Rules*

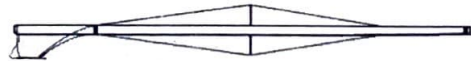
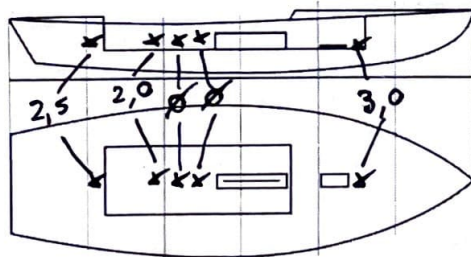
HULL NUMBER	32008	BUILDER	MAS GROUP SRL
MODEL	DB-R1	YEAR OF MANUFACTURE	2025
OWNER	AUGIE DIAZ	COUNTRY	USA

BARE HULL	<input type="checkbox"/>	COMPLETE	<input checked="" type="checkbox"/>	INCOMPLETE	<input type="checkbox"/>
HULL MATERIAL: WOOD	<input type="checkbox"/>	FIBERGLASS	<input checked="" type="checkbox"/>	make note of	
DECK MATERIAL: WOOD	<input type="checkbox"/>	FIBERGLASS	<input checked="" type="checkbox"/>	incomplete items	
FROM CERTIFIED MOULD	<input checked="" type="checkbox"/>			filling the cells with <b>NO</b>	

HULL WEIGHT (min 125kg)	129,00	MAST LENGTH (Rules C.9.2, F.3.4)	699	<i>50 Gold</i>
TOTAL WEIGHT (min 172.8kg)	172,8	Limiting marks & pin	✓	
CORRECTOR WEIGHTS (max 15kg)	7,5	Corrector weights (max 100gr)	NO	
MOI	241,032	BOOM LENGTH (max 2642mm)	2628	
Spring set #	126	Limiting marks & pin	✓	
JIB FITTING	281	POLE LENGTH (max 2642mm)	2639	
(279-330mm hor. From Hull Datum Point)		RUDDER DIMENSIONS	✓	
max 45mm vert. above sheerline)		Weight (min. 2.72kg)	3,0	
SHROUDS (1778-1981mm from HDP)	1780	Corrector weights (Rule C.8.5)	NO	
MAST HOLE (min 1494-mm from HDP)	1494	Parallel to transom (tolerance 2mm)	✓	
UPPER GUDGEON (Rule D.2.3)	407	DAGGERBOARD DIMENSIONS	✓	
LOWER GUDGEON (Rule D.2.3)	155	Band	✓	
GUDGEONS DIAMETER (Rule D.2.3)	8mm	Safety line (max 610mm long)	✓	
		Restraining system (hooks or tablet)	✓	

Insert the **actual** measurement in the cells marked as

Mark corrector weights position and amount below. Data to be copied on the Official Snipe Label



DATE MEASURED 23/06/25 MEASURER'S STAMP

MEASURER'S NAME ENRICO MICHEL

NOTES:

Snipe Class International Racing Association  
**10 SCIRA**  
**MEASURER**  
**ITALY**

DIAZ 1 NR??

HULL NR. 32008

SCIRA MDS Rev. "J-d" - July 2019

Keel				
Station	Height		Width	
	Actual	Allowable Range	Actual	Allowable Range
400mm	225	223-235		
1		162	82	Min 51
2	96	89-101	102	99-105
3	60	51-63	102	99-105
4	68	58-70	102	99-105
5		114	102	99-105
Transom	170	166-178	102	99-105

Stem Offset		
up from baseline	back from HDP	Actual
267	267-279	278
305	194-206	194
337	153-165	162
381	108-120	113
457	54-66	64
527	26-38	31
311 to 387	intersection of chine extension	

Miscellaneous					
Measurement	Actual	Allowable Range	Measurement	Actual	Allowable Range
LOA	4733	4711-4737	Chine radius at st. 1		Max 19.
Horizontal transom offset	206	203-229	Chine radius st. 2 to transom		Max 3
Hull Datum Point height	701	683-708	Deck height	100	Max 127
Bow radius		Max 25	Cockpit width	810	Max 1016

Topside Measurements					
Measurement	Actual	Allowable Range	Measurement	Actual	Allowable Range
Aft end of dagg. slot from Hull datum point	2462	2438-2464	Heel point to sheer (vertical)	395	390-400
Top of case parallel to baseline		tolerance 2	Mast hole in the deck	170x60	Max 256x76
Aft edge of slot perpendicular to baseline		tolerance 2	Length of foredeck	1866	Min 1842
Forward edge of slot perpendicular to baseline		tolerance 6	Length of aft deck	1210	Min 457
Keel to top of daggerboard case	311	310-313	Sheer strikes	✓	Max 32
Length of daggerboard slot	523	Max 546	Gunwale radius		Max 12
Width of daggerboard slot	12	Max 13	Splashboard	✓	Min 51 x 610

Measurer  
MICHEL BENICO

Stamp nr. 105018  
SCIRA MEASURER ITALY  
Snipe Class International Racing Association

### SCIRA Measurement Data Sheet

To be used with the 80/20 true baseline measurement frame

For boats built from January 1st, 2018. For older boats use the MDS in force in the year of manufacturing

Owner AUGIE DIAZ Date \_\_\_\_\_

Hull 32008 Builder MAS GROUP SRL Material FIBERGLASS

NEW MOULD: FIRST  OR  OF 5 CERTIFICATION RENEW  Y/N

DO NOT COMPLETE IF FROM A CERTIFIED MOULD

Chine						
	Height			Width		
Station	Starboard	Port	Total	Allowable Range	Actual	Allowable Range
1	418	430	848	838-864	538	527-540
2	354	372	726	724-749	999	991-1003
3	325	352	677	673-699	1238	1232-1245
4	335	349	684	680-705	1275	1270-1283
5	377	393	770	762-787	1140	1137-1149
Transom	450	463	913	902-927	961	952-965

Sheer						
	Height			Width		
Station	Starboard	Port	Total	Allowable Range	Actual	Allowable Range
1	761	782	1548	1499-1549	921	895-921
2	699	731	1430	1391-1441	1363	1346-1372
3	656	691	1347	1333-1384	1535	1511-1537
4	653	674	1327	1321-1372	1494	1473-1499
5	657	682	1339	1321-1372	1293	1270-1295
Transom	684	701	1385	1384-1435	1035	1022-1048

Snipe Class International Racing Association  
**MICHAEL MULLER**  
 ITALY