



# Snipe Class International Racing Association Class Measurement Certificate

Hull Number 32011  
Year of Manufacturer 2025

Builder MAS GROUP Model DB-R1

Weight 173,20

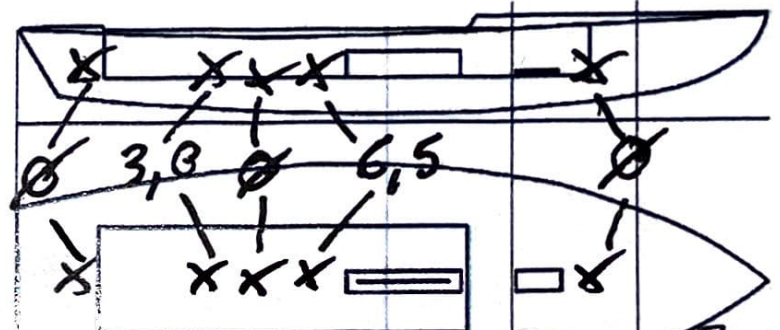
Mark corrector weights here

Corrector weights 9,5

Mast builder PMB

Corrector weights NO

MOI value 274,687



Owner AUGIE DIAZ

Country USA

Measurer/s MICHEL ENRICO SCIRA stamp # 10

**10 SCIRA MEASURER ITALY**

This certificate is not valid until signed and stamped by the NS. This certificate indicates that the boat has a registered MDS on file in the SCIRA office.

Date of measurement 23/06/25

National Secretary signature \_\_\_\_\_

*I hereby agree to all SCIRA Rules and Bylaws. I agree to notify a SCIRA measurer if any equipment is modified, replaced and/or transferred to proceed to a new measurement. SCIRA reserves the right to measure this boat and any equipment at any time.*

Owner signature \_\_\_\_\_

Date \_\_\_\_\_

**THIS CERTIFICATE REMAINS WITH THE OWNER OF THIS SNIPE.  
IT CAN BE REPLACED BY REMEASUREMENT**

# SNIFE CLASS RACING ASSOCIATION

## MEASUREMENT DATA SHEET FOR CERTIFIED BOATS

Revised February 2019

This page to be used for all boats. *For measurements in Italic refer to the Class Rules*

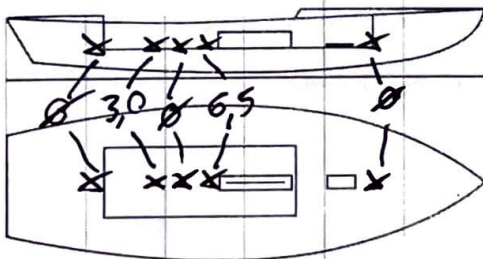
HULL NUMBER	320.11	BUILDER	MAS GROUP SRL
MODEL	DB-RL	YEAR OF MANUFACTURE	2025
OWNER	AUGIE DIAZ	COUNTRY	USA

BARE HULL	<input type="checkbox"/>	COMPLETE	<input checked="" type="checkbox"/>	INCOMPLETE	<input type="checkbox"/>
HULL MATERIAL: WOOD	<input type="checkbox"/>	FIBERGLASS	<input checked="" type="checkbox"/>	make note of	
DECK MATERIAL: WOOD	<input type="checkbox"/>	FIBERGLASS	<input checked="" type="checkbox"/>	incomplete items	
FROM CERTIFIED MOULD	<input checked="" type="checkbox"/>	filling the cells with <b>NO</b>			

HULL WEIGHT (min 125kg)	128,10	MAST LENGTH (Rules C.9.2, F.3.4)	6499	SW GOLD
TOTAL WEIGHT (min 172.8kg)	173,20	Limiting marks & pin	U	
CORRECTOR WEIGHTS (max 15kg)	9,5	Corrector weights (max 100gr)	NO	
MOI	274,687	BOOM LENGTH (max 2642mm)	2628	
Spring set #	126	Limiting marks & pin	✓	
JIB FITTING	280	POLE LENGTH (max 2642mm)	2641	
(279-330mm hor. From Hull Datum Point)		RUDDER DIMENSIONS	✓	
max 45mm vert. above sheerline)		Weight (min. 2.72kg)	3,20	
SHROUDS (1778-1981mm from HDP)	1729	Corrector weights (Rule C.8.5)	NO	
MAST HOLE (min 1494-mm from HDP)	1494	Parallel to transom (tolerance 2mm)	✓	
UPPER GUDGEON (Rule D.2.3)	410	DAGGERBOARD DIMENSIONS	✓	
LOWER GUDGEON (Rule D.2.3)	155	Band	✓	
GUDGEONS DIAMETER (Rule D.2.3)	8mm	Safety line (max 610mm long)	✓	
		Restraining system (hooks or tablet)	✓	

Insert the **actual** measurement in the cells marked as

Mark corrector weights position and amount below. Data to be copied on the Official Snipe Label



DATE MEASURED 23/06/25 MEASURER'S STAMP

MEASURER'S NAME NICHEL ENRICO

NOTES:

Snipe Class International Racing Association  
**10 SCIRA**  
**MEASURER**  
**ITALY**

### SCIRA Measurement Data Sheet

To be used with the 80/20 true baseline measurement frame

For boats built from January 1st, 2018. For older boats use the MDS in force in the year of manufacturing

Owner AUGIE DIAZ Date 23/06/25

Hull 32011 Builder MAS GROUP SRL Material FIBERGLASS

NEW MOULD: FIRST  OR  OF 5 CERTIFICATION RENEW  Y/N

DO NOT COMPLETE IF FROM A CERTIFIED MOULD

<b>Chine</b>						
	Height				Width	
Station	Starboard	Port	Total	Allowable Range	Actual	Allowable Range
1				838-864		527-540
2				724-749		991-1003
3				673-699		1232-1245
4				680-705		1270-1283
5				762-787		1137-1149
Transom				902-927		952-965

<b>Sheer</b>						
	Height				Width	
Station	Starboard	Port	Total	Allowable Range	Actual	Allowable Range
1				1499-1549		895-921
2				1391-1441		1346-1372
3				1333-1384		1511-1537
4				1321-1372		1473-1499
5				1321-1372		1270-1295
Transom				1384-1435		1022-1048

MEASURER: MICHEL ENRICO



### SCIRA Measurement Data Sheet

To be used with the 80/20 true baseline measurement frame

For boats built from January 1st, 2018. For older boats use the MDS in force in the year of manufacturing

Owner AUGIE DIAZ Date 23/06/25  
 Hull 32011 Builder MAS GROUP SRL Material FIBERGLASS

NEW MOULD: FIRST  OR  OF 5 CERTIFICATION RENEW  Y/N

DO NOT COMPLETE IF FROM A CERTIFIED MOULD

Chine						
	Height				Width	
Station	Starboard	Port	Total	Allowable Range	Actual	Allowable Range
1				838-864		527-540
2				724-749		991-1003
3				673-699		1232-1245
4				680-705		1270-1283
5				762-787		1137-1149
Transom				902-927		952-965

Sheer						
	Height				Width	
Station	Starboard	Port	Total	Allowable Range	Actual	Allowable Range
1				1499-1549		895-921
2				1391-1441		1346-1372
3				1333-1384		1511-1537
4				1321-1372		1473-1499
5				1321-1372		1270-1295
Transom				1384-1435		1022-1048

MEASURER: MICHEL ENRICO

