

SNIFE CLASS RACING ASSOCIATION

MEASUREMENT DATA SHEET FOR CERTIFIED BOATS

Revised February 2019

This page to be used for all boats. *For measurements in Italic refer to the Class Rules*

HULL NUMBER	32023	BUILDER	JIBETECH
MODEL	MK 3	YEAR OF MANUFACTURE	2025
OWNER	CHARLES (GREN)	COUNTRY	USA

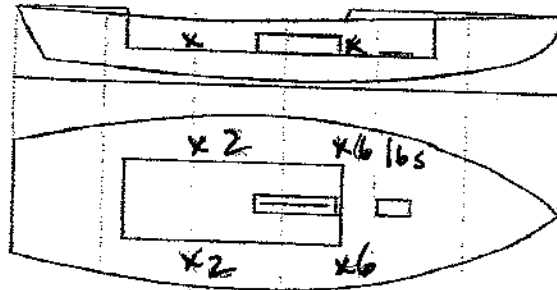
BARE HULL	<input type="checkbox"/>	COMPLETE	<input checked="" type="checkbox"/>	INCOMPLETE	<input type="checkbox"/>
HULL MATERIAL: WOOD	<input type="checkbox"/>	FIBERGLASS	<input checked="" type="checkbox"/>	make note of	
DECK MATERIAL: WOOD	<input type="checkbox"/>	FIBERGLASS	<input checked="" type="checkbox"/>	incomplete items	
FROM CERTIFIED MOULD	<input type="checkbox"/>			filling the cells with NO	

365
381
16
52.17

HULL WEIGHT (min 125kg)	165	MAST LENGTH (Rules C.9.2, F.3.4)	6100
TOTAL WEIGHT (min 172.8kg)	173	Limiting marks & pin	<input checked="" type="checkbox"/>
CORRECTOR WEIGHTS (max 15kg)	7.3	Corrector weights (max 100gr)	-
MOI	27.6	BOOM LENGTH (max 2642mm)	2642
Spring set #	15.97	Limiting marks & pin	<input checked="" type="checkbox"/>
JIB FITTING	<input checked="" type="checkbox"/>	POLE LENGTH (max 2642mm)	2642
(279-300mm hor. From Hull Datum Point)		RUDDER DIMENSIONS	
(max 45mm vert. above sheerline)		Weight (min. 2.72kg)	2.8
SHROUDS (1778-1981mm from HDP)	1981	Corrector weights (Rule C.8.5)	-
MAST HOLE (min 1494mm from HDP)	1495	Parallel to transom (tolerance 2mm)	<input checked="" type="checkbox"/>
UPPER GUDGEON (Rule D.2.3)	407	DAGGERBOARD DIMENSIONS	
LOWER GUDGEON (Rule D.2.3)	152	Band	<input checked="" type="checkbox"/>
GUDGEONS DIAMETER (Rule D.2.3)	8mm	Safety line (max 610mm long)	610
		Restraining system (hooks or tablet)	<input checked="" type="checkbox"/>

Insert the **actual** measurement in the cells marked as

Mark corrector weights position and amount below. Data to be copied on the Official Snipe Label



DATE MEASURED 5/23/25 MEASURER'S STAMP

MEASURER'S NAME Case Cronin

NOTES: Boat did not yet have taped band in place